



Off the Streets Program

Housing and Community
Development Board

Thursday, October 5, 2023

Tonight's Request of the Board

Hear an update, discuss and provide feedback on the City's Off the Streets program and learn about a related proposal to finalize purchase of an existing hotel at 6733 E. Main Street as a longer-term solution for this program.



[City's Strategy](#)

[Program Overview](#)

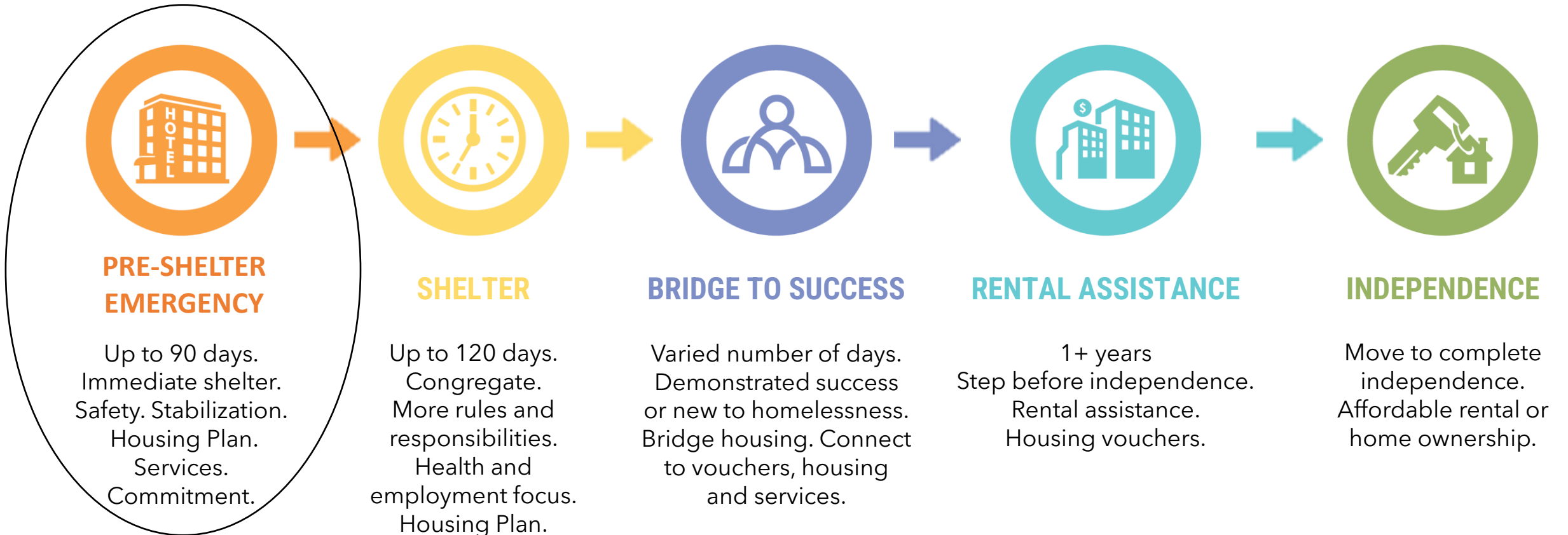
[Good Neighbor Policy](#)

[Public Safety](#)

[Property Details](#)

Mesa's Pathway to Housing

Launch to success



- Program has existed for 3 years in Mesa
- Temporary housing program for people experiencing homelessness
- Mesa's most vulnerable individuals are served; **ONLY seniors, families and domestic violence victims if hotel purchased**
- Referrals from Mesa Police, Fire, Parks
- Allows City to enforce urban camping
- Case management to connect to services
- Housing plan
- Rules and requirements
- Up to 90-day stay
- No sex offenders
- Closed campus



City's Strategy



Program Overview



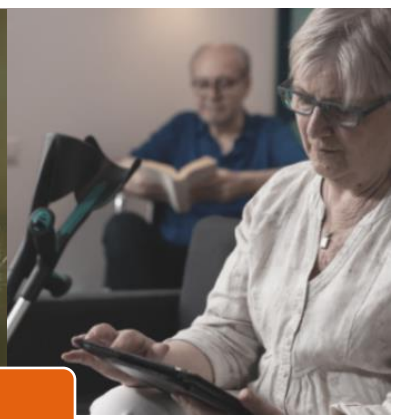
Good Neighbor Policy



Public Safety

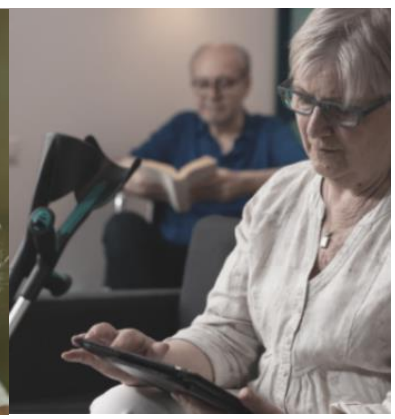


Property Details



Who we serve

- 39% have physical disabilities
- 12% are aged 62+
- 19% are youth under 18
- 4% are Veterans
- 21% are survivors of domestic violence
- 49% women
- 73-80% successfully graduate to the next step in their housing plan

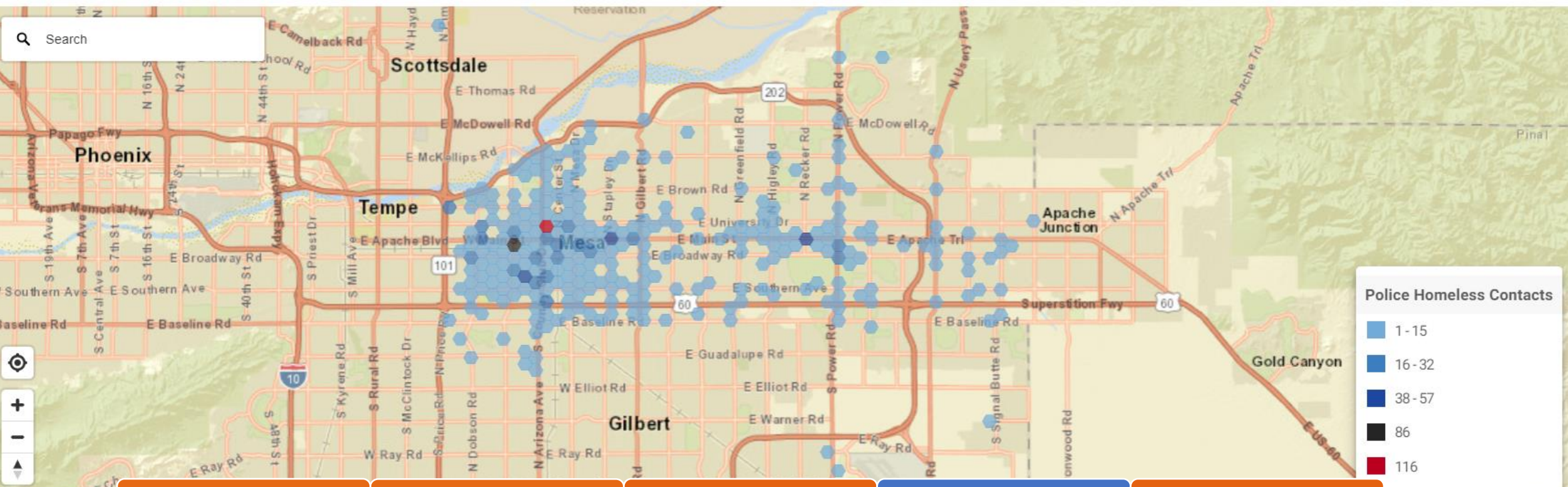


Police Contacts with Individuals Experiencing Homelessness - Calls for Service

Location of contacts since January 1, 2020 - present resulting from 911 calls for service or officer-initiated calls. **Excludes** police proactive outreach contacts (HOP). For information about proactive contacts see the "Mesa Police Homeless Outreach Project" (HOP) charts below.

Police Contacts with Homeless - Calls for Service

Current calendar year homeless contacted via 911 or police officer initiated calls, aggregated by # of contacts. Locations shown as geographic hexagons representing 1/8 mile area. Excludes police proactive contacts (HOP)



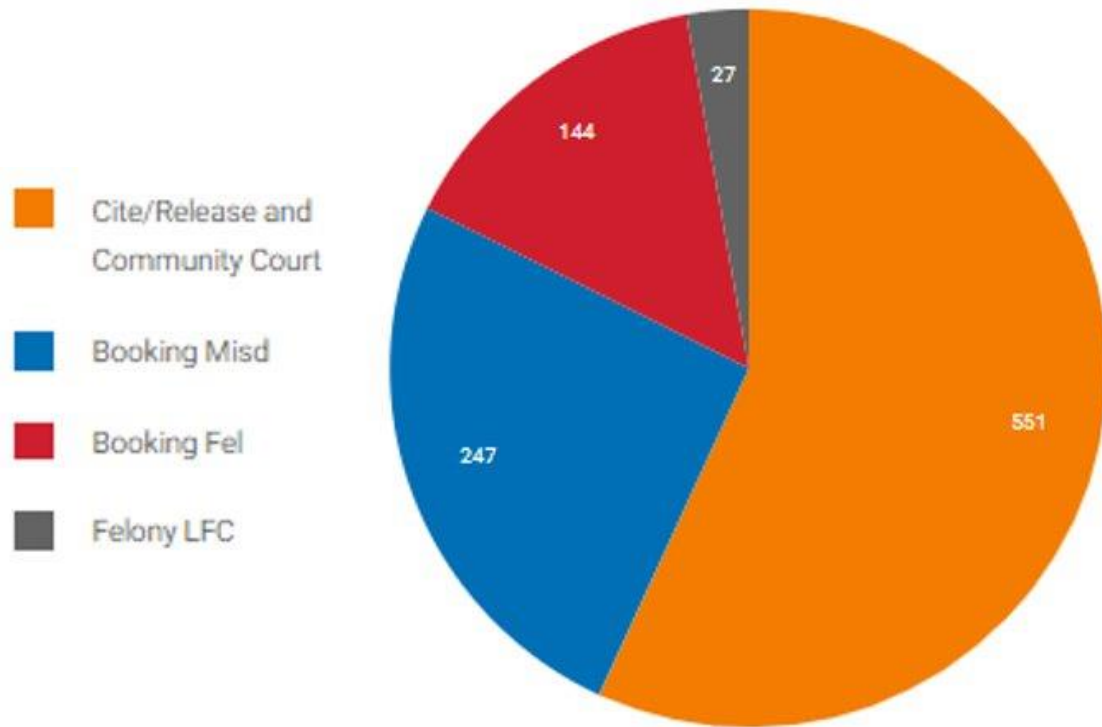
- Dedicated police officer on-site 24/7.
- Nonprofit partners on-site oversight and case management day and night.
- No walk-up or drop-in services are available or allowed.
- Clean and well-maintained campus.
- Limited outdoor areas for participant use visually buffered from the surrounding community and businesses.
- Room checks to ensure safety and program compliance.
- Curfew enforced for program participants 10 pm.
- No visitors are allowed without permission and monitoring.
- Off-campus wrap-around services.
- Address homelessness that currently exists in the area and direct connection to MPD for future public safety concerns.
- A phone number and email is provided for nearby businesses and residents to connect with the City with questions/concerns.
- Comprehensive safety/amenity review of nearby neighborhood to enhance safety; plan to implement feasible improvements.

Martin v. City of Boise 9TH CIRCUIT 2018

“That is, as long as there is no option of sleeping indoors, the government cannot criminalize indigent, homeless people for sleeping outdoors, on public property, on the false premise they had a choice in the matter.”

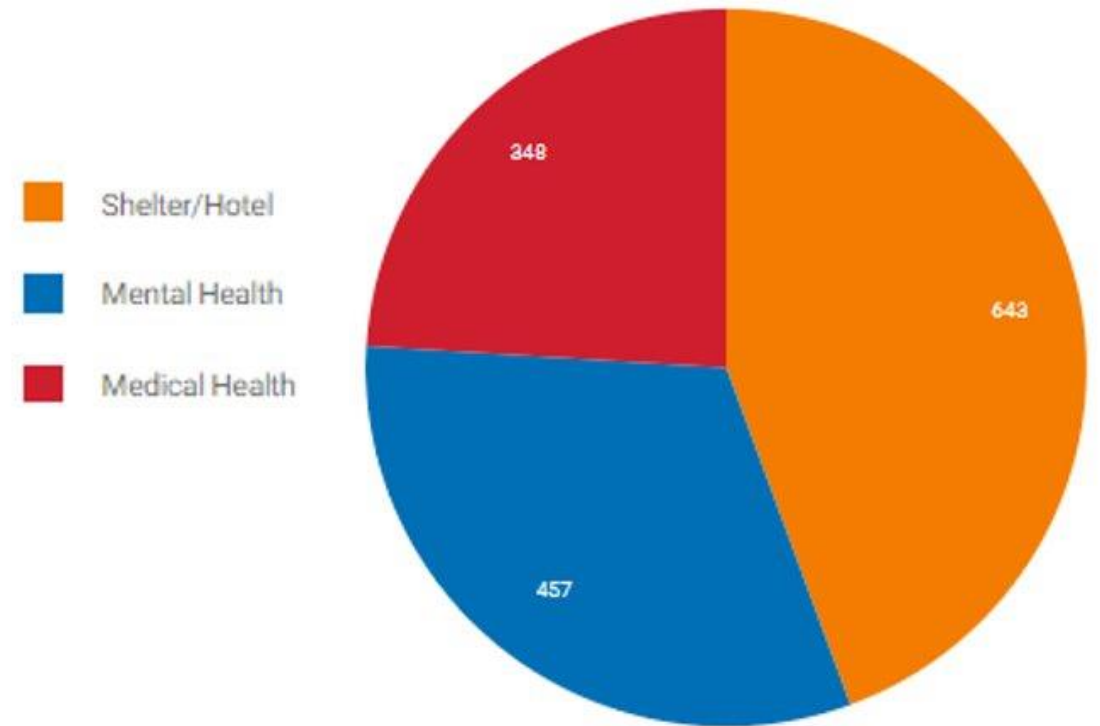
Homeless Outreach Project (HOP) Arrests

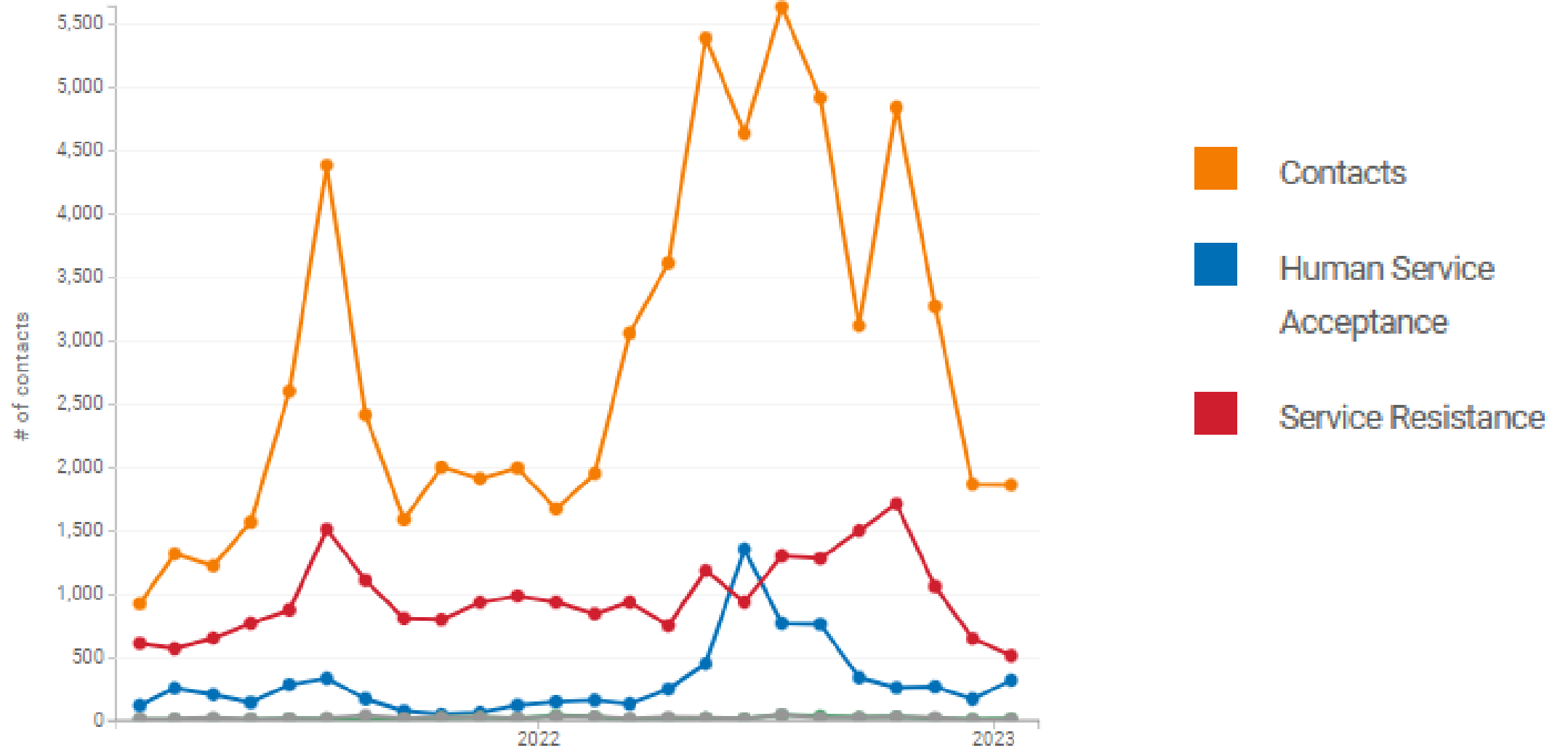
Contacts by police during outreach events resulting in citation/ release or arrest during the last 365 days.

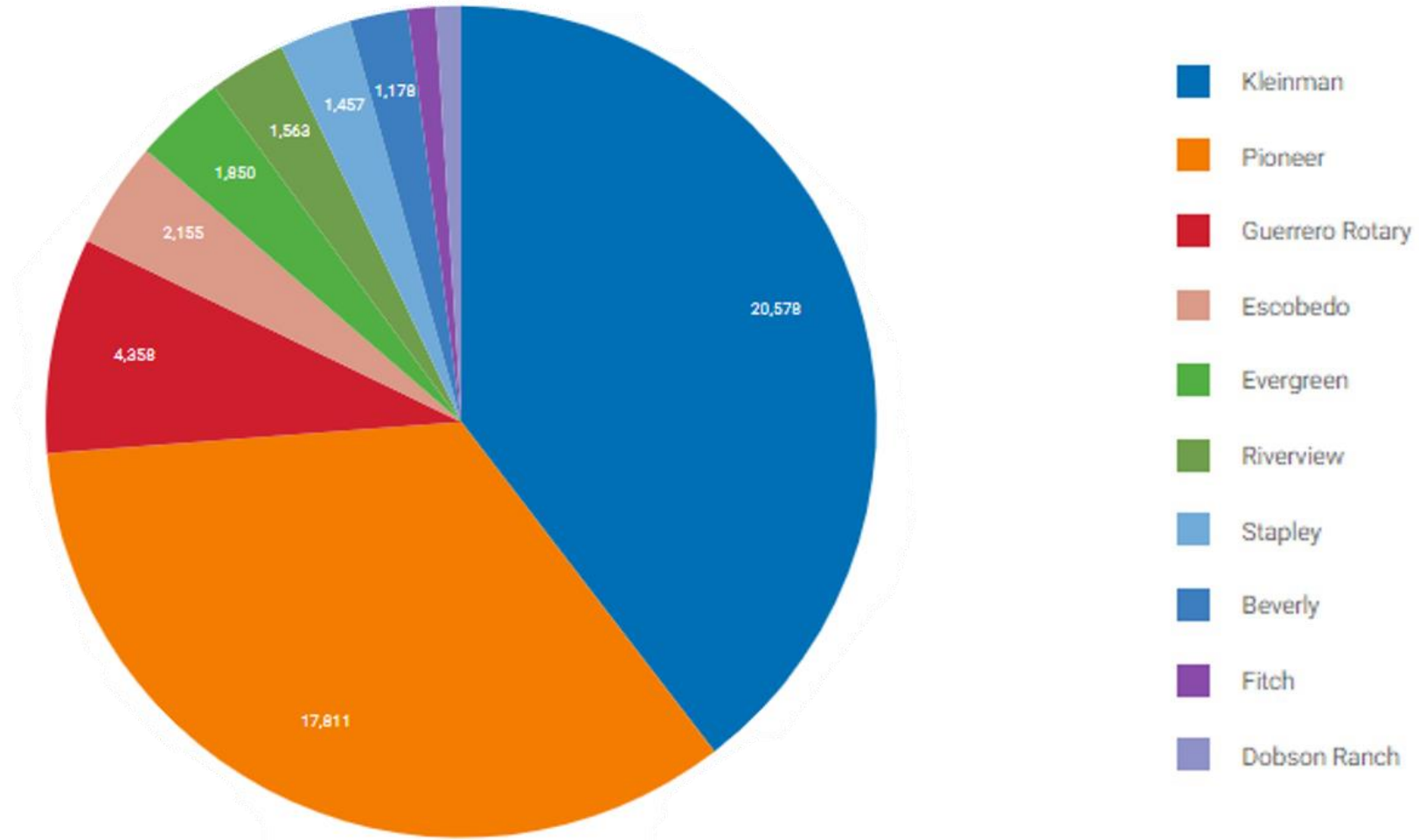


Homeless Outreach Project (HOP) Services Accepted

Services accepted by individuals during outreach events by police during the last 365 days.

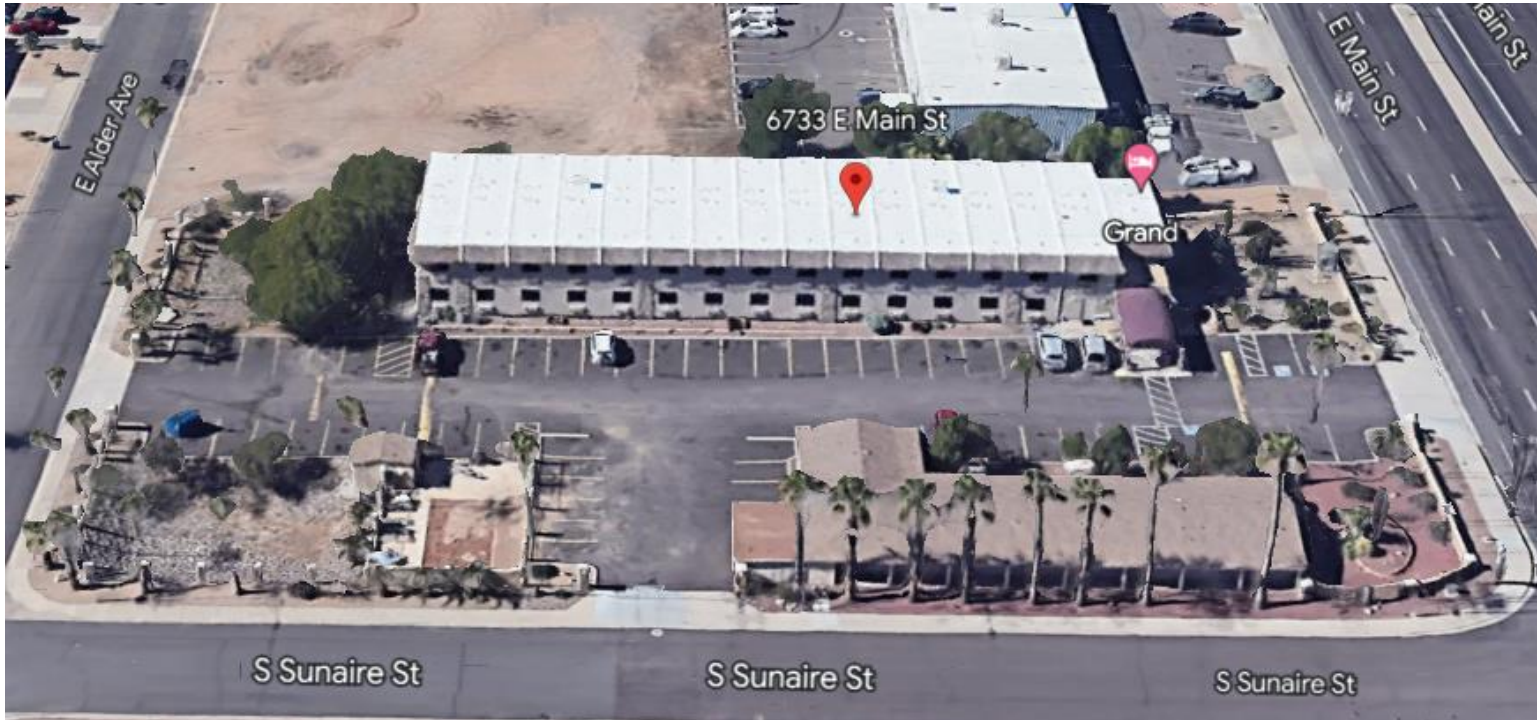






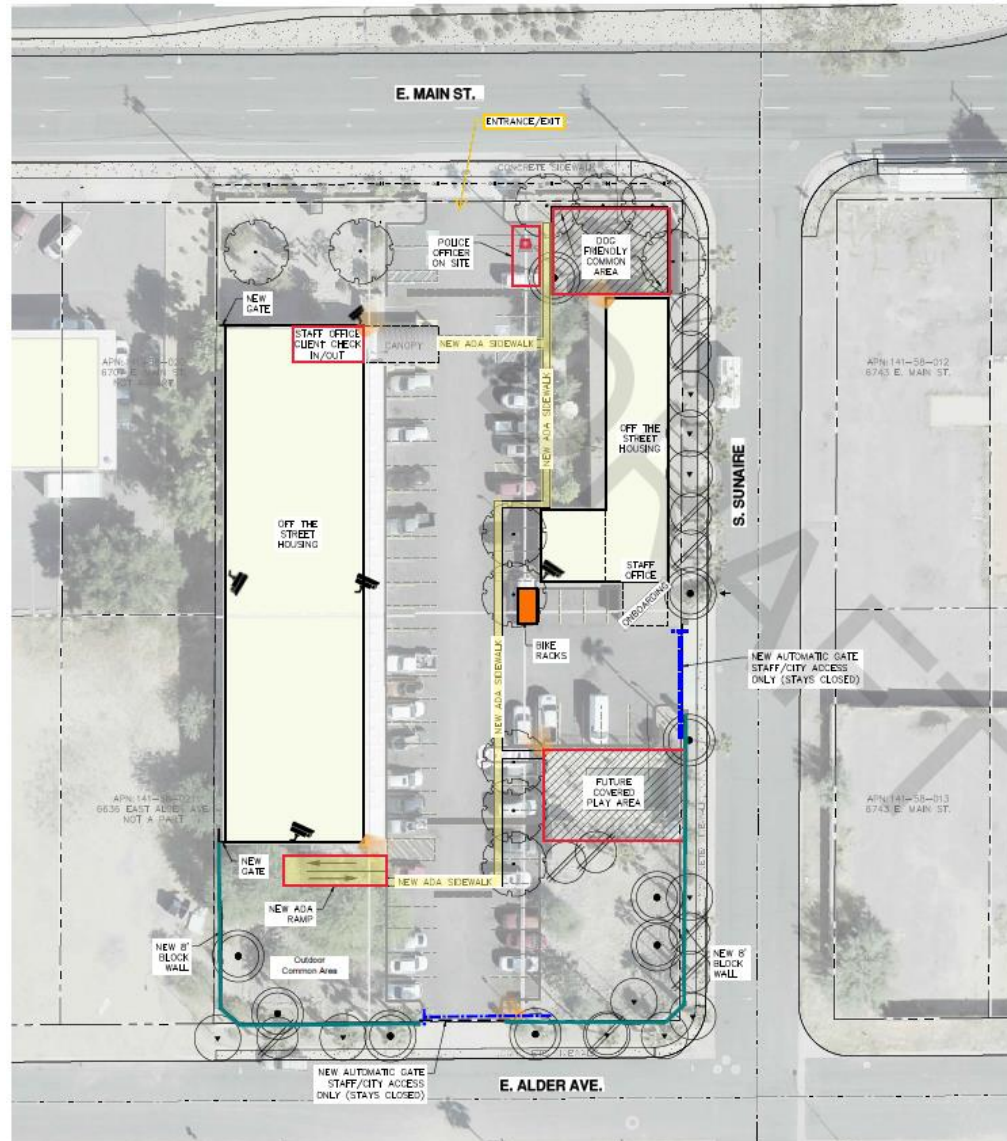


- 6733 E Main Street
- Power and Main
- 70 Rooms
- Built in 1973/1985
- 1.34 acres



(Underway) Council Use Permit and rezoning for:













- Social Services Use
- Relocate portions of Off the Streets Program if approved



SITE IMPROVEMENT NOTES

1. LIGHTING UPGRADES THROUGHOUT SITE
2. REMOVE/REPLACE PALM TREES WITH LEVISED, NATIVE TREES
3. ADA IMPROVEMENTS AT DRIVEWAYS AND SIDEWALK RAMP

LANDSCAPE PLANT LEGEND

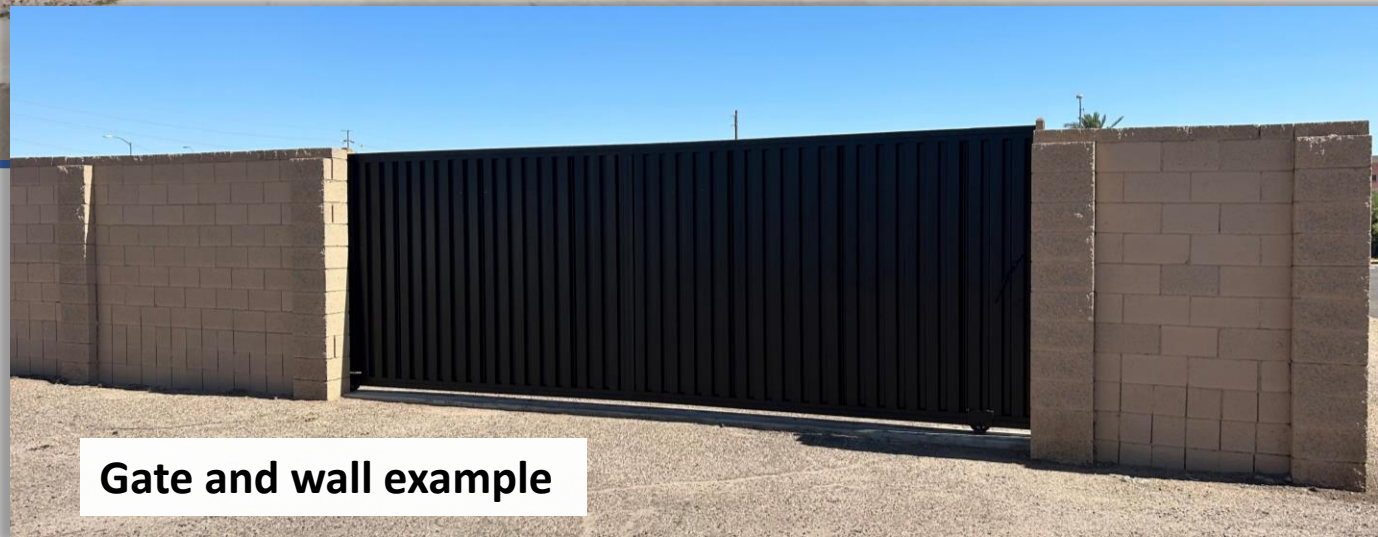
TREES	
SYMBOL	BOTANICAL NAME / COMMON NAME
	PROSCOPIS VELUTINA VELVET MESQUITE
	PETRAECIA RED PINE RED PINE PINEAPPLE
	QUERCUS FUSIFORMIS JOHN LIONETT JOHN LIONETT LIVE OAK
	CASUALPINA CAGALAGO CASCALOTE
	CHLOPSIS LINEARIS TURKEY DESERT WILLOW
	Police on site
	Automatic Gate
	Bike Rack
	Entrance/Exit
	Outdoor Light
	Security Camera
	8' Block Wall

Proposed dog friendly area

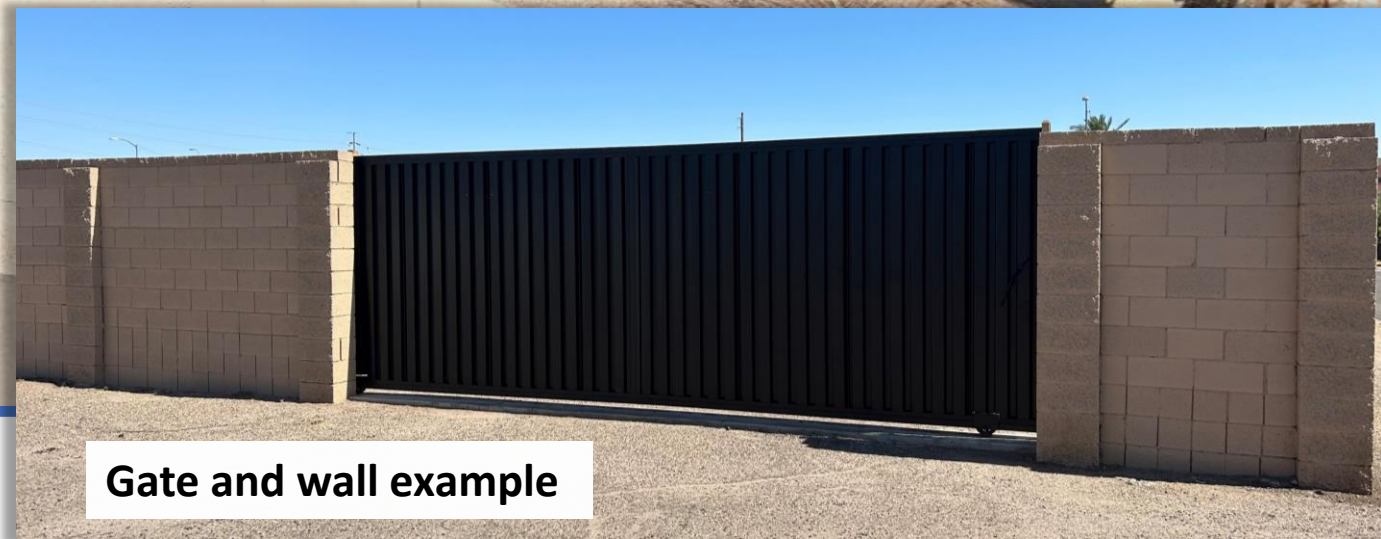
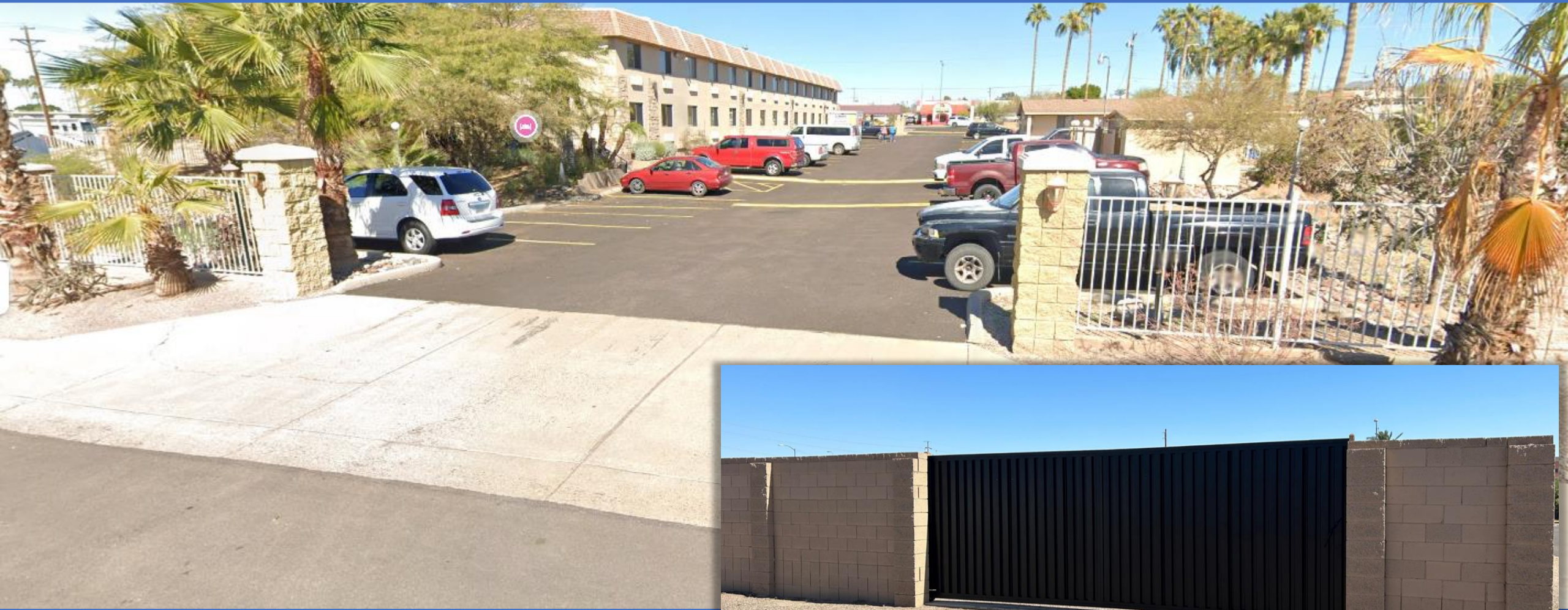


ADA improvements





Gate and wall example



Gate and wall example



[City's Strategy](#)

[Program Overview](#)

[Good Neighbor Policy](#)

[Public Safety](#)

[Property Details](#)



[City's Strategy](#)

[Program Overview](#)

[Good Neighbor Policy](#)

[Public Safety](#)

[Property Details](#)

Tonight's Request of the Board

Hear an update, discuss and provide feedback on the City's Off the Streets program and learn about a related proposal to finalize purchase of an existing hotel at 6733 E. Main Street as a longer-term solution for this program.

Next steps for this project:

City Council consideration

- Introduction; setting public hearing date Oct. 16
- Public hearing and Council action: Nov. 6



Questions?

Thank you!

480-644-HOPE (4673)

offthestreets@mesaaz.gov

www.mesaaz.gov/offthestreets

Emergency 911

For a crime in progress.

If you feel unsafe for any reason.

Someone is unstable, yelling/crying hysterically, using substance, or causing a disturbance.

Mesa PD Non-Emergency 480-644-2211

For non-emergency police questions.

To report an incident that has already happened.

Mesa Homeless Resource Line 480-644-HOPE (4673)

M-Th business hour response.
Non-emergency.

To refer anyone requesting services or resources.

For any other homelessness questions about getting/giving help.

Off the Streets Public Safety Hotline

24/7 Line

For First Responders Only
PD/Fire/Parks

To access services/shelter for someone when enforcing urban camping, etc.

Encampment Reporting

Non-emergency pd
480-644-2211

Mesa Now App

Citylink